



**Graphenexpress Advanced Material Technologies Con. L.L.C.**

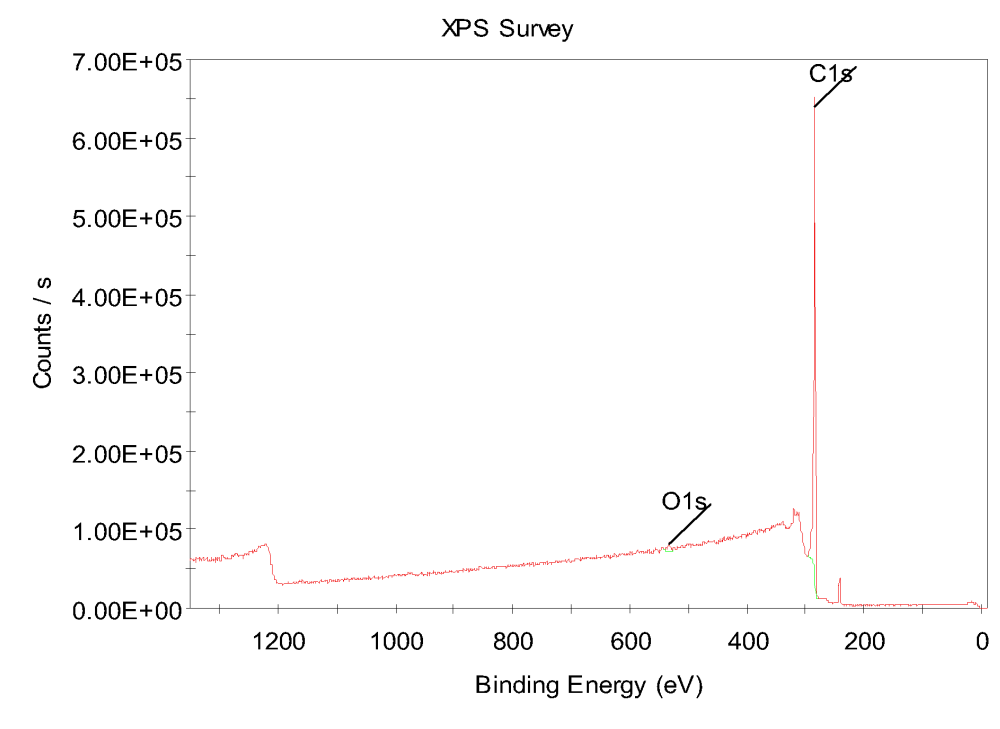
Adatepe , Dogus St. , No:207 AG/1,  
Depark, Buca/IZMIR (Dokuz Eylül  
University, Tinaztepe Campus,  
Technopark)

**EXPANDED GRAPHITE TECHNICAL DATASHEET**

<b>Form</b>	Powder
<b>Color</b>	Dark Grey
<b>Dispersibility</b>	Polar Solvent (DMF, NMP, etc.)
<b>Conductivity (S/m) *</b>	2500 ± 100

*\*4-point-probe measurement on pellets (compressed under 5 tonnes for 10 minutes)*

**1) ELEMENTAL ANALYSIS**



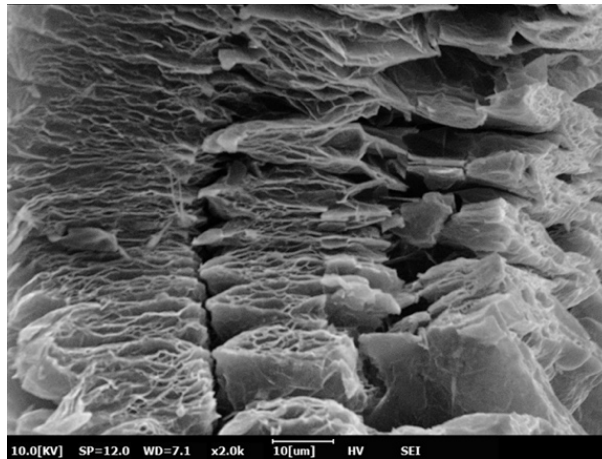
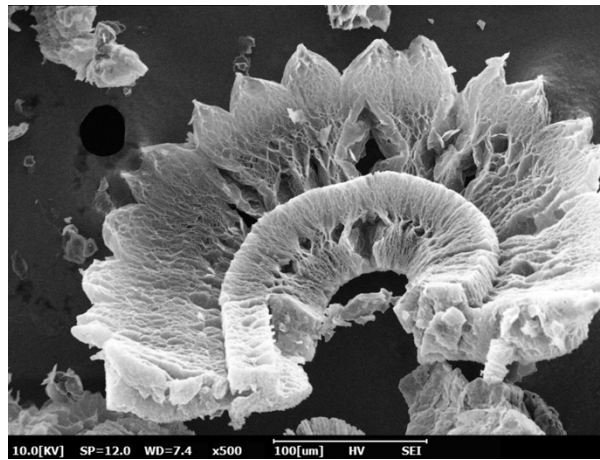
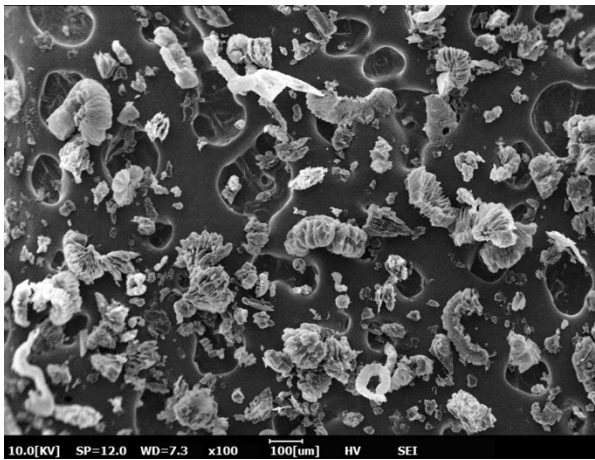
<b>C (wt.%)</b>	98.5 ± 0.5
<b>O (wt.%)</b>	1.5 ± 0.5



*Graphenexpress Advanced Material  
Technologies Con. L.L.C.*

Adatepe , Dogus St. , No:207 AG/1,  
Depark, Buca/IZMIR (Dokuz Eylul  
University, Tinaztepe Campus,  
Technopark)

## 2) MICROSTRUCTURAL ANALYSIS

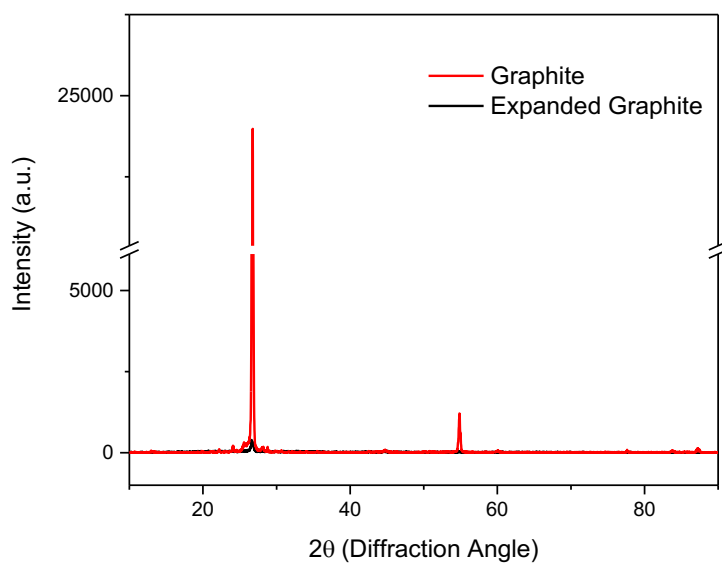




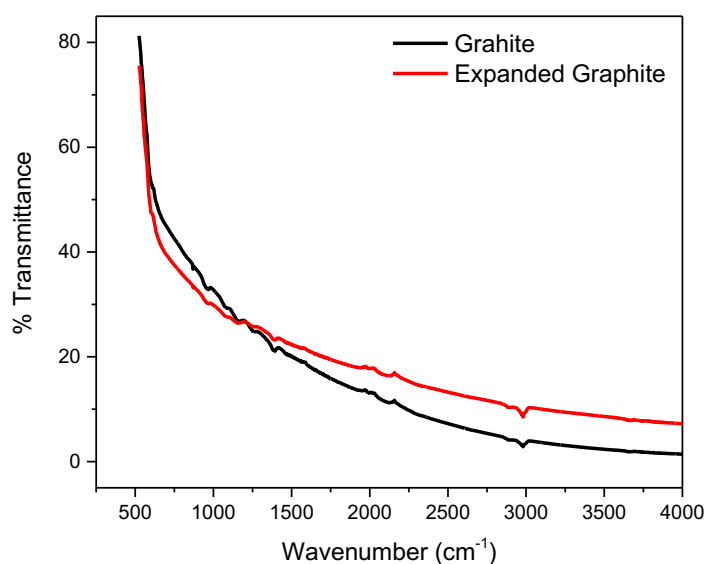
**Graphenexpress Advanced Material Technologies Con. L.L.C.**

Adatepe , Dogus St. , No:207 AG/1,  
Depark, Buca/IZMIR (Dokuz Eylül  
University, Tinaztepe Campus,  
Technopark)

### 3) STRUCTURAL ANALYSIS



### 4) FTIR ANALYSIS



*The information contained in this datasheet is derived from analysis of a typical batch of each product. It is given for information purposes only, without guarantee.*