



**Graphenexpress Advanced Material  
Technologies Con. L.L.C.**

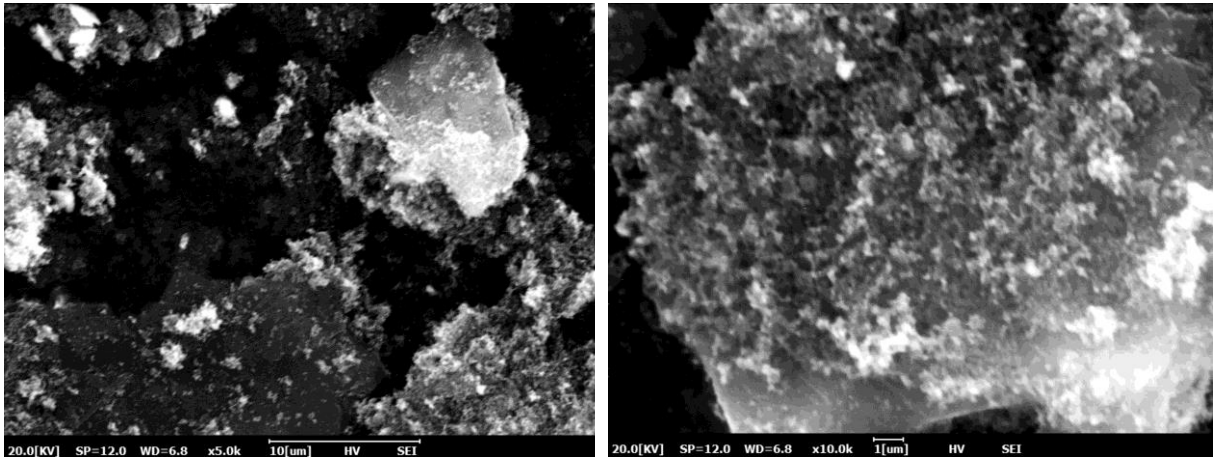
Adatepe , Dogus St. , No:207 AG/1,  
Depark, Buca/IZMIR (Dokuz Eylül  
University, Tınaztepe Campus,  
Technopark)

## **CARBON BLACK TECHNICAL DATASHEET**

<b>Form</b>	Powder
<b>Color</b>	Black
<b>Dispersibility</b>	Polar Solvent
<b>Conductivity (S/m) *</b>	100 ± 15

*\*4-point-probe measurement on pellets (compressed under 5 tonnes for 10 minutes)*

### **1) MICROSTRUCTURAL ANALYSIS**

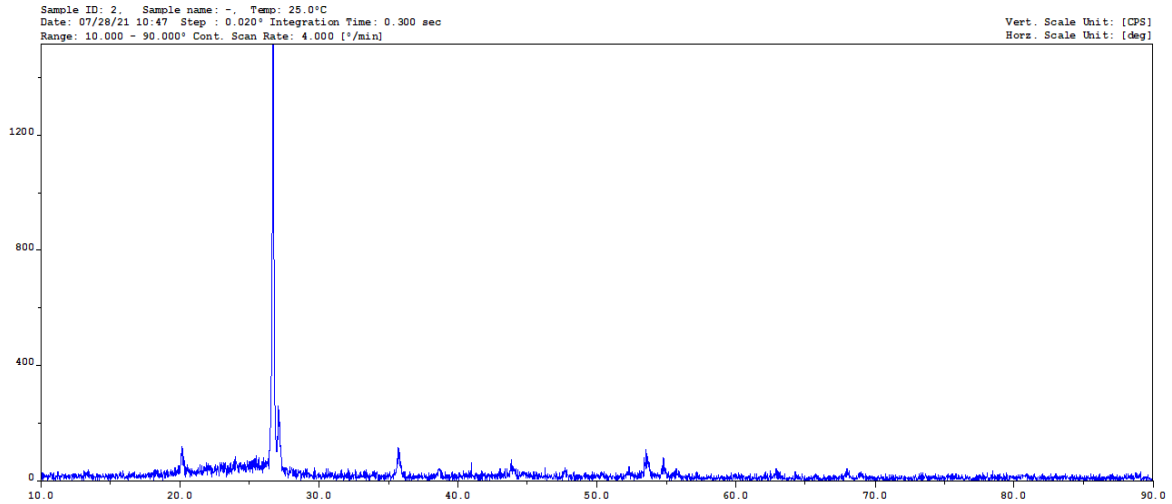




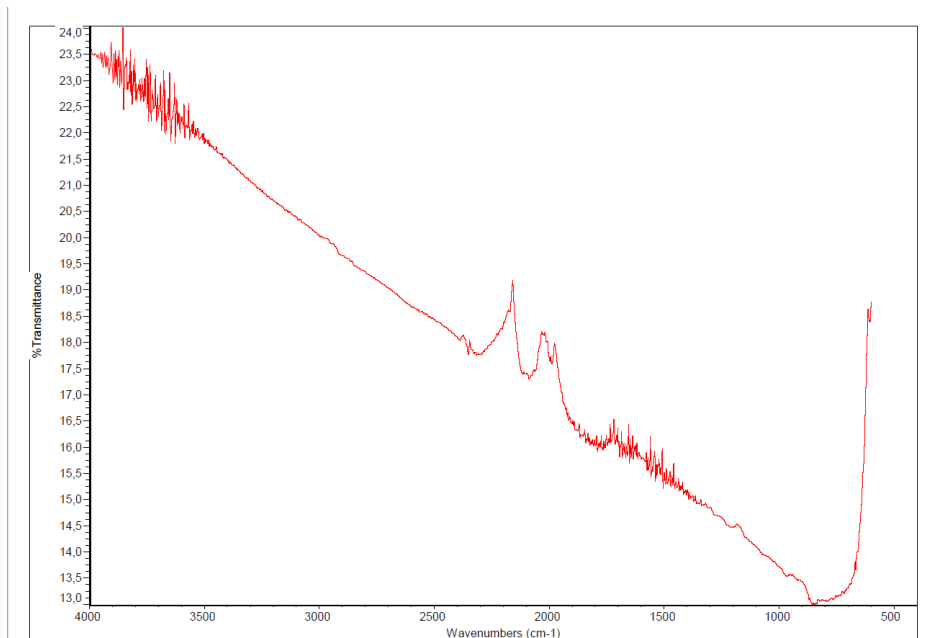
**Graphenexpress Advanced Material  
Technologies Con. L.L.C.**

Adatepe , Dogus St. , No:207 AG/1,  
Depark, Buca/IZMIR (Dokuz Eylül  
University, Tınaztepe Campus,  
Technopark)

## 2) STRUCTURAL ANALYSIS



## 3) FTIR ANALYSIS



*The information contained in this datasheet is derived from analysis of a typical batch of each product. It is given for information purposes only, without guarantee.*